



# GTA Commercial Q2 2010 Statistics

Prepared For:

## Toronto Real Estate Board

*A special report prepared by RealNet Canada Inc. for members of the Toronto Real Estate Board analyzing the GTA commercial property sales market.*

**July 23, 2010**

ReallInfo Data As Of:

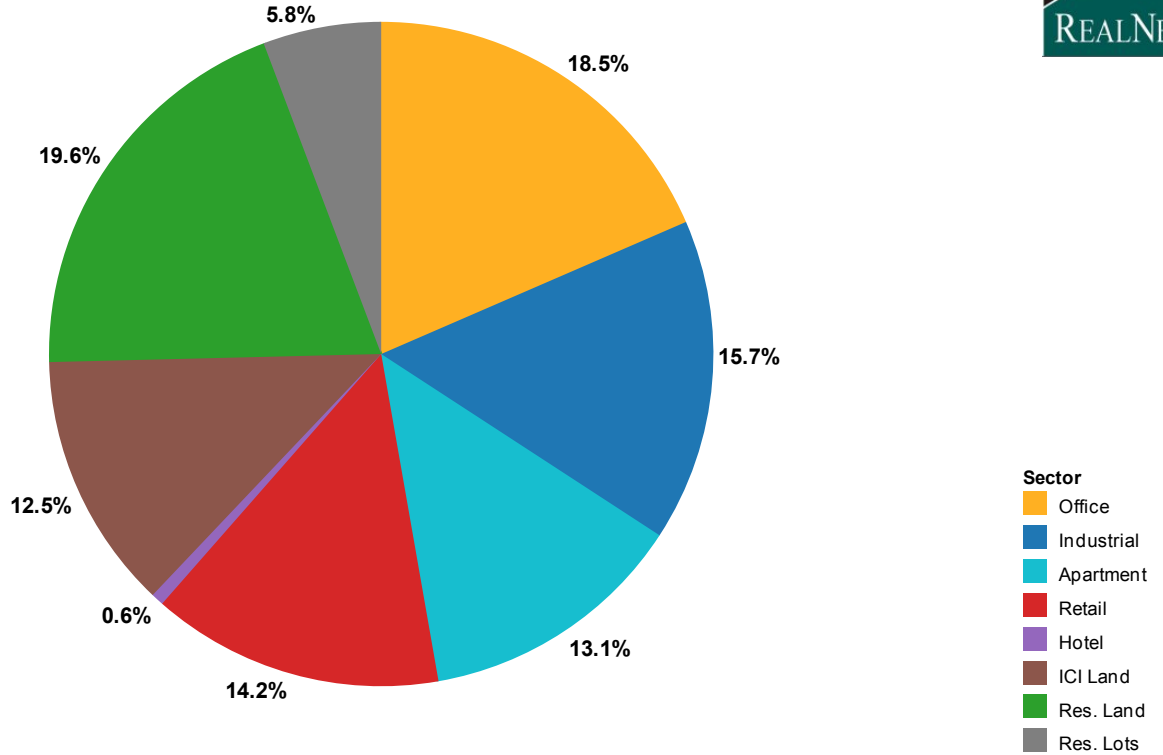
**June 30, 2010**

© RealNet Canada Inc. makes no representation about the accuracy, completeness, or the suitability of the material represented herein for the particular purposes of the Licensee. All information contained herein, including, without limitation, prices, features, options, floor plans, commissions and any other details are subject to change without notice. Licensee must verify information with builder. RealNet Canada Inc. assumes no responsibility or liability for errors in the information, or omissions from the database and is not a party to any agreement between the Licensee, as agent, and the builder, as vendor. E.&O.E.

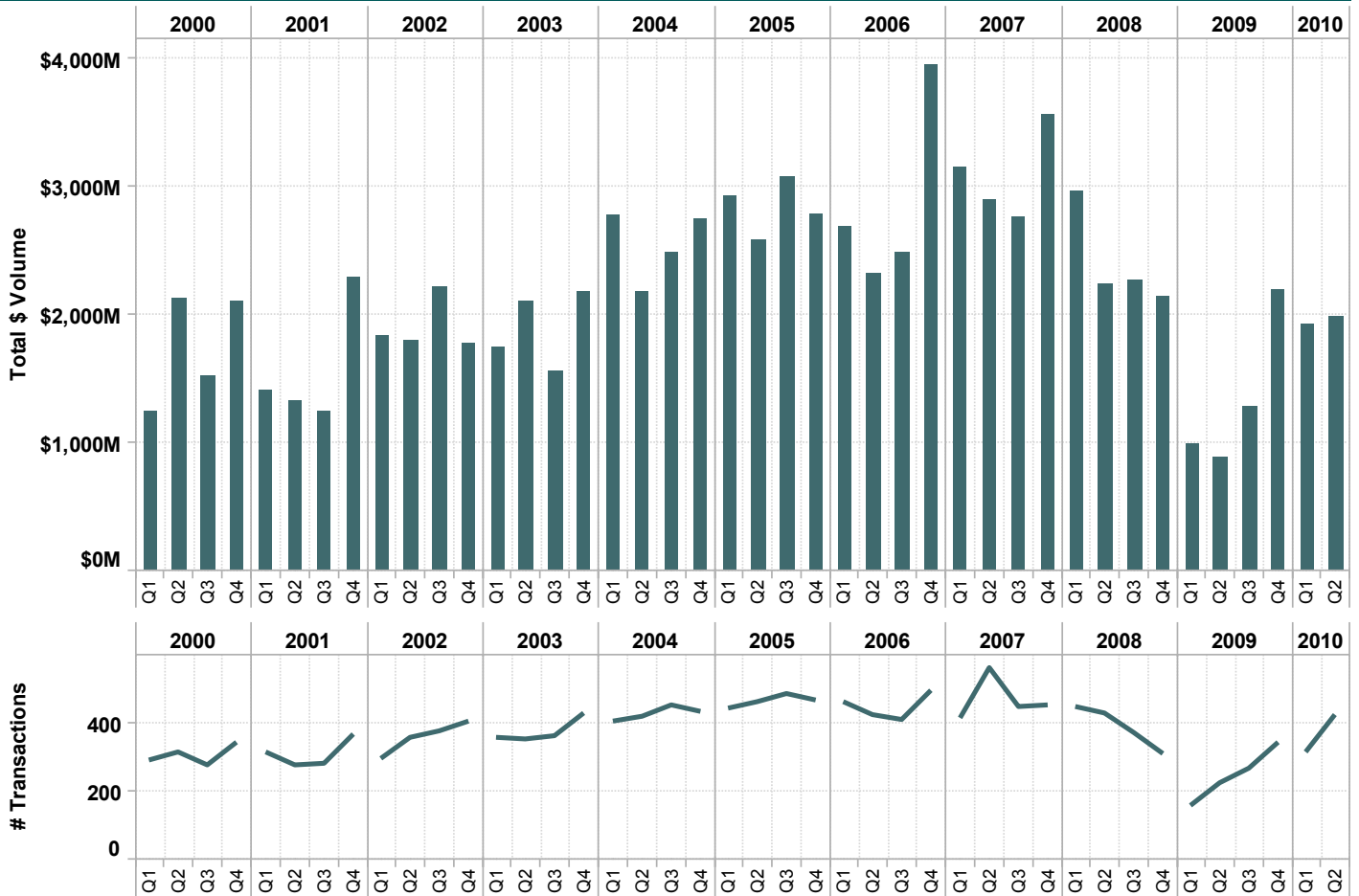
Copyright: RealNet Canada Inc.



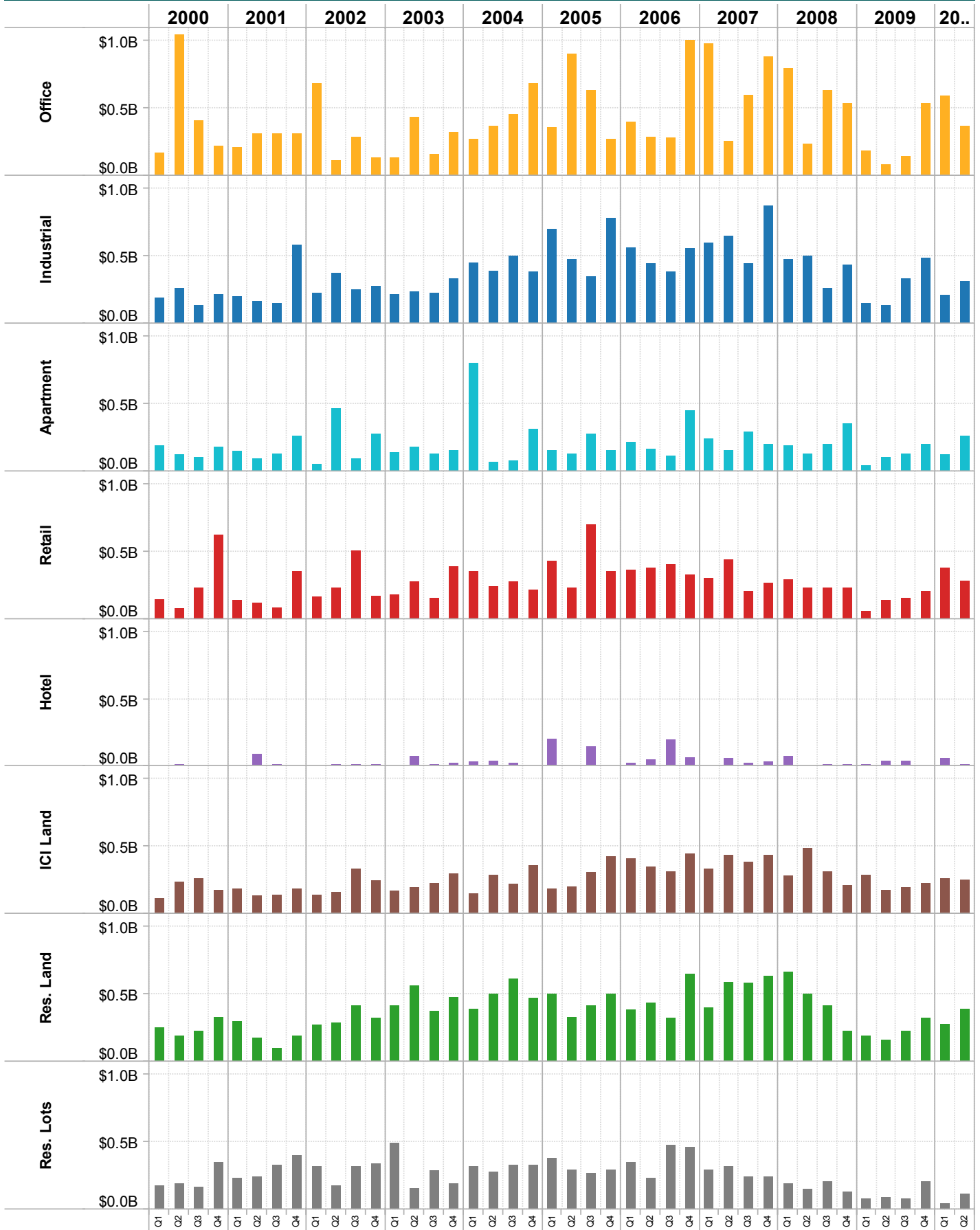
## Q2 2010 Property Transactions - Total \$ Volume by Sector



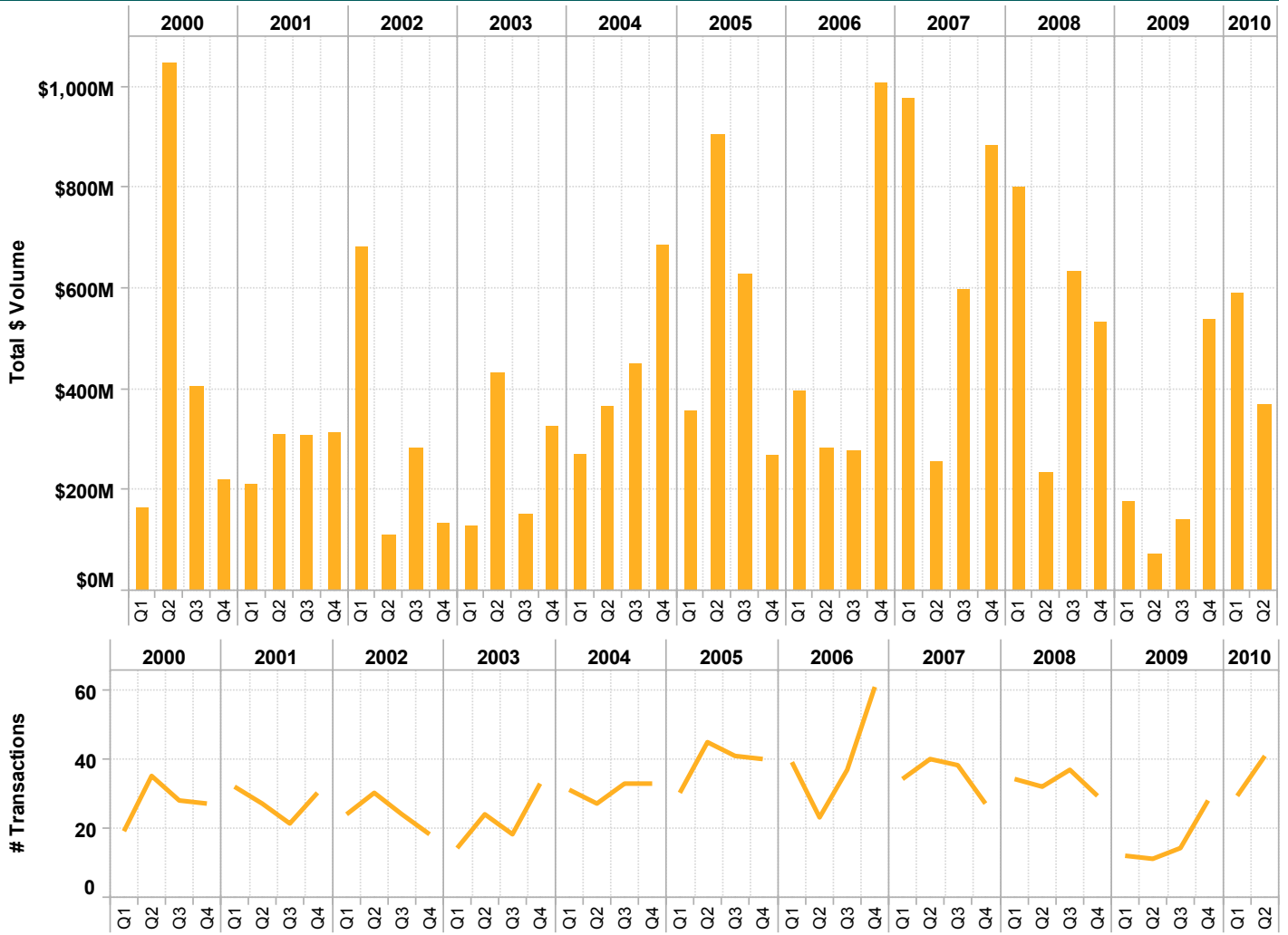
## Property Transactions - All Sectors by Quarter



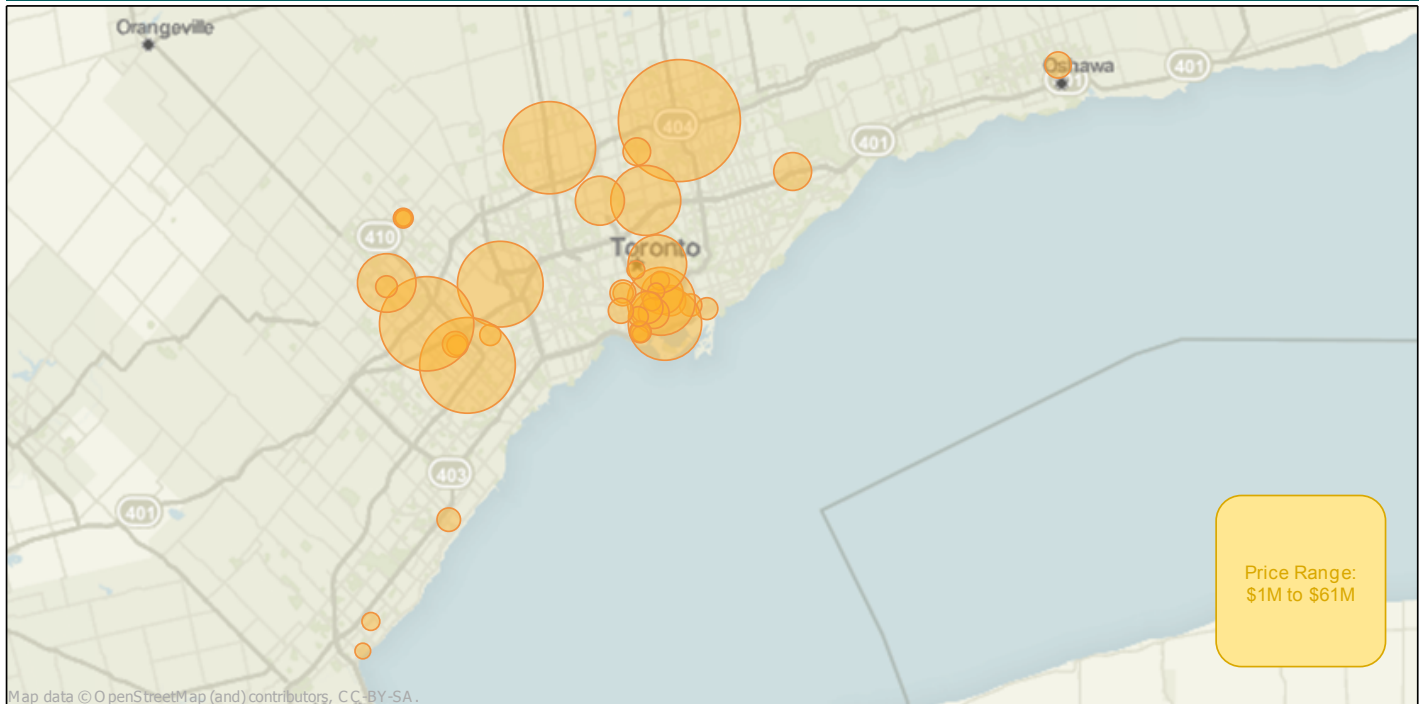
## Property Transactions - Total \$ Volume by Quarter & Sector



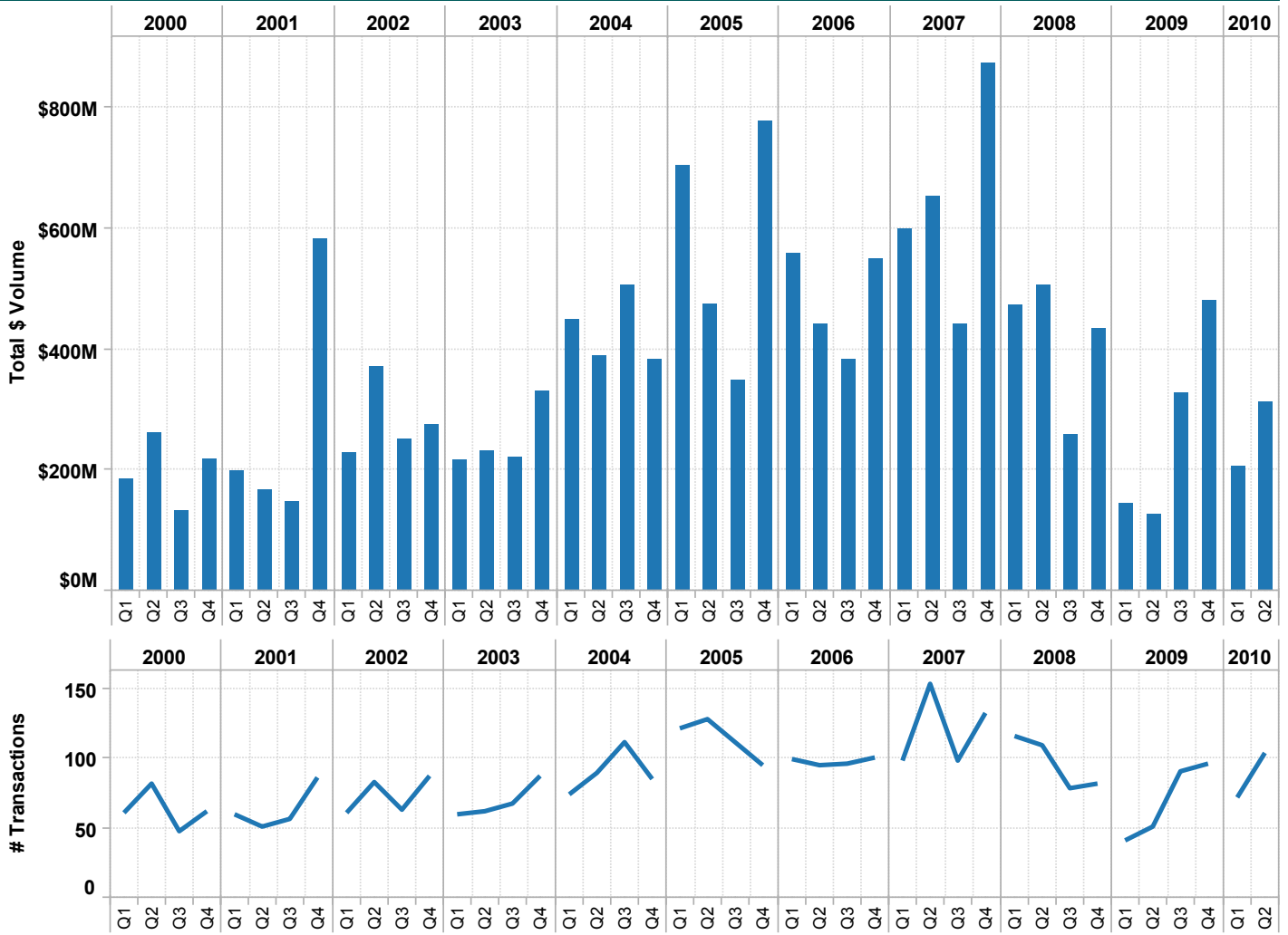
## Office Property Transactions - Q1 2000 to Q2 2010



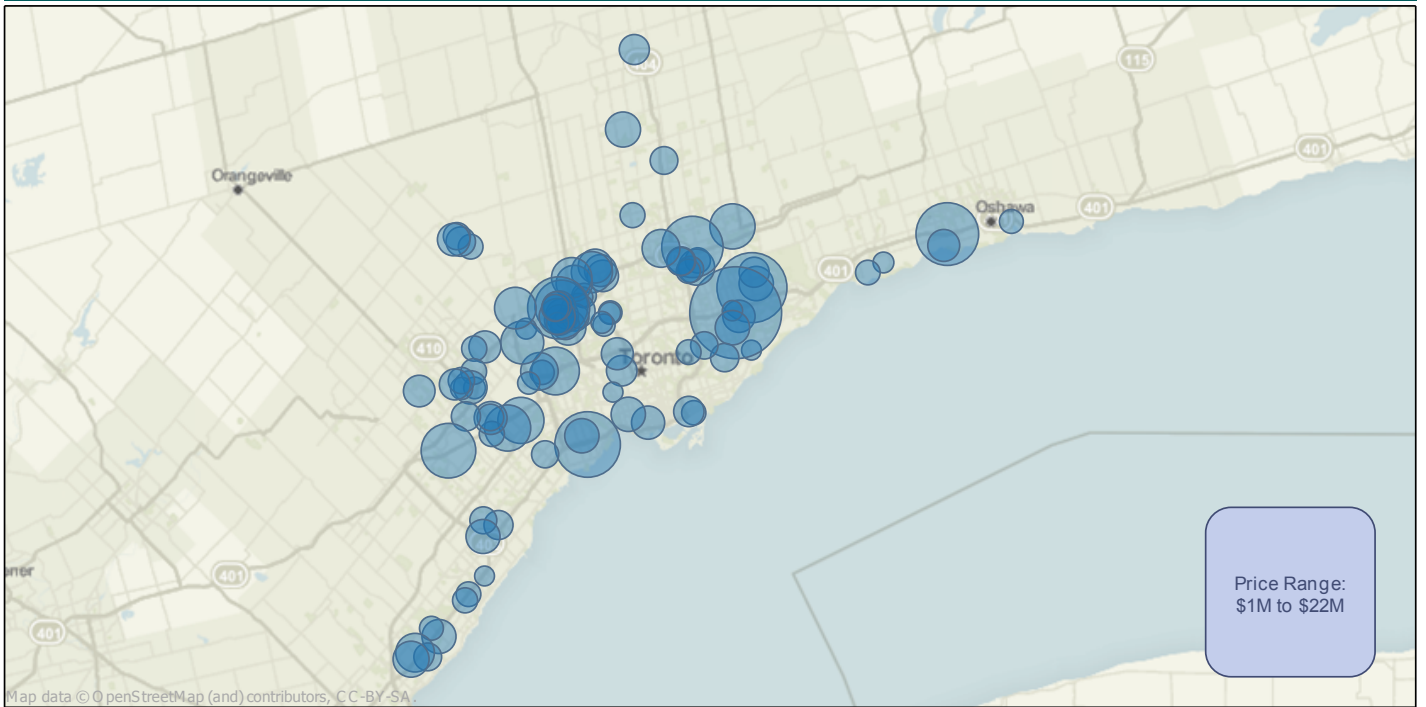
## Office Property Transactions - Q2 2010



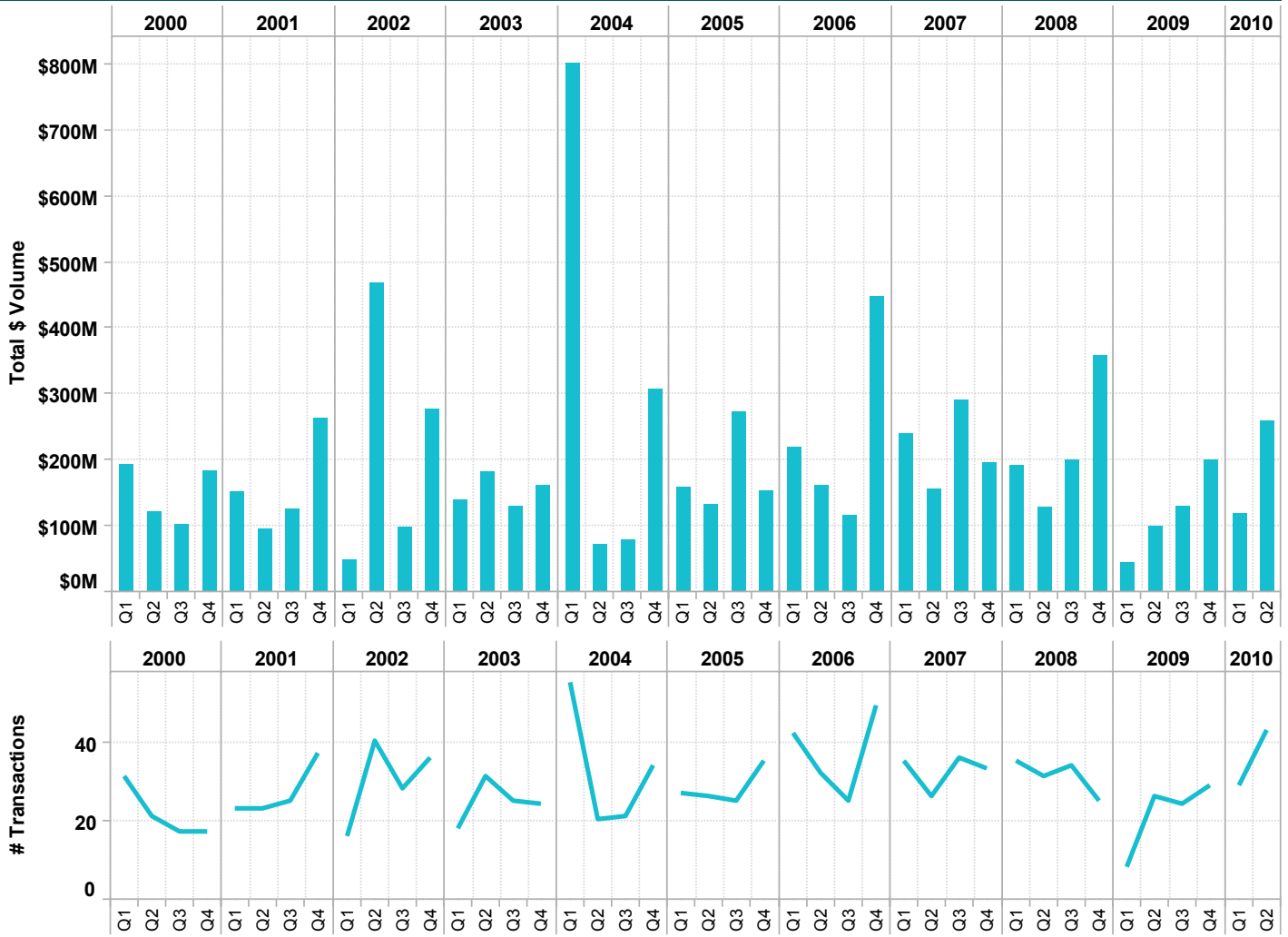
### Industrial Property Transactions - Q1 2000 to Q2 2010



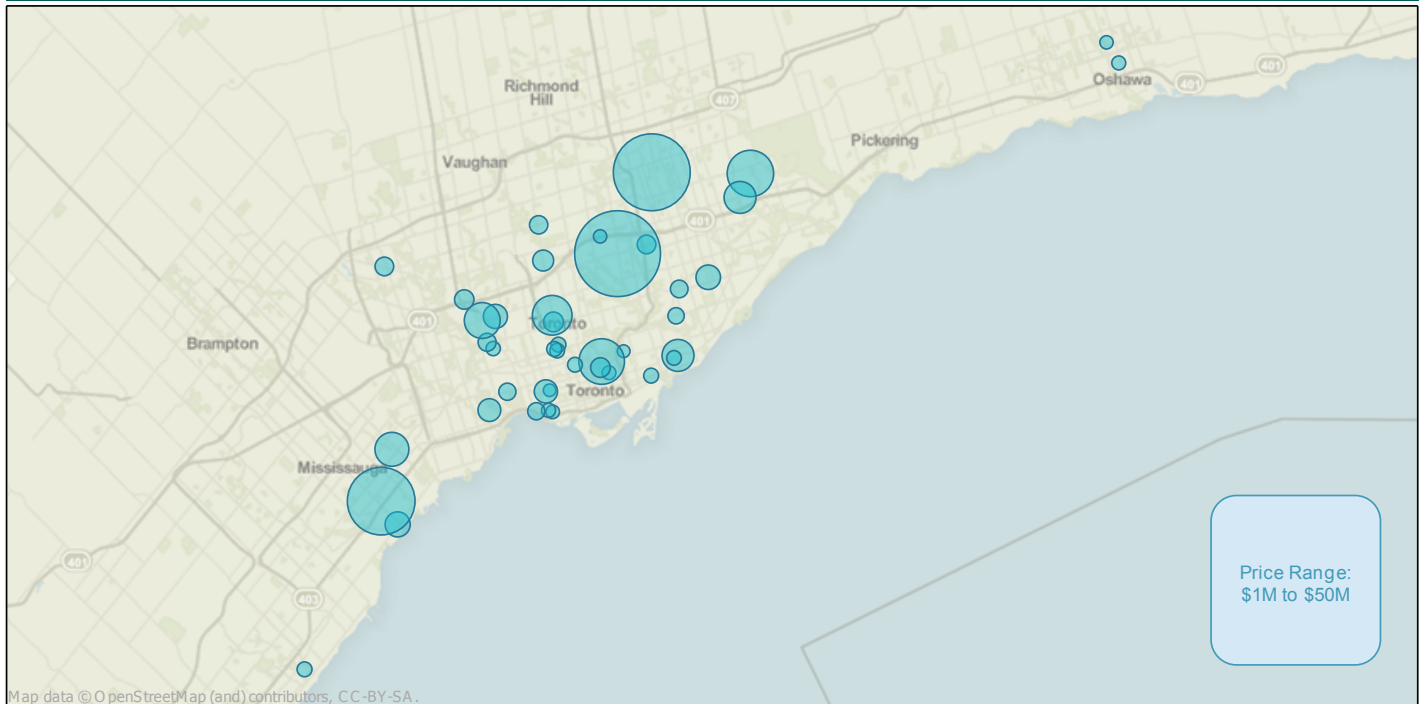
### Industrial Property Transactions - Q2 2010



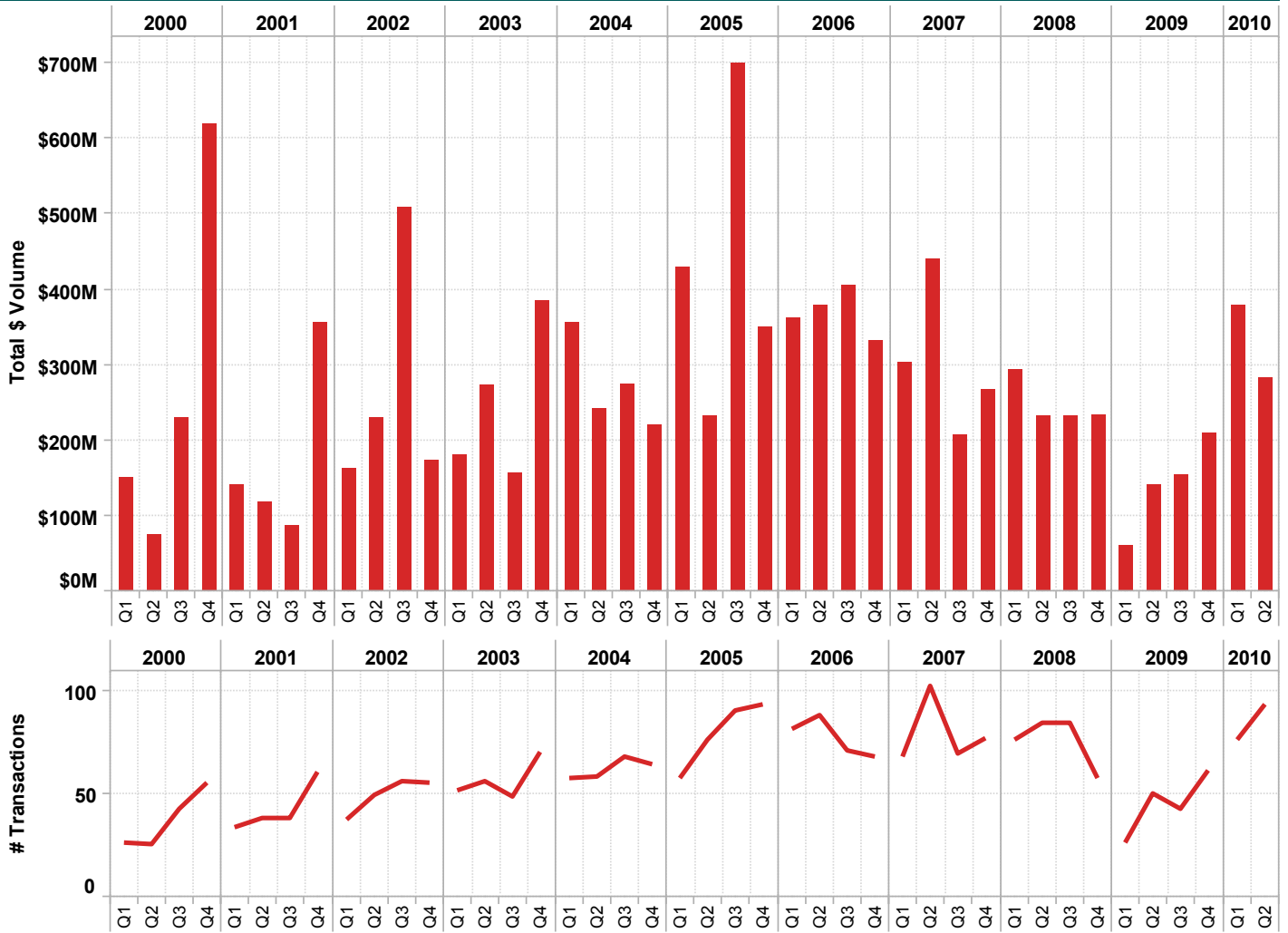
## Apartment Property Transactions - Q1 2000 to Q2 2010



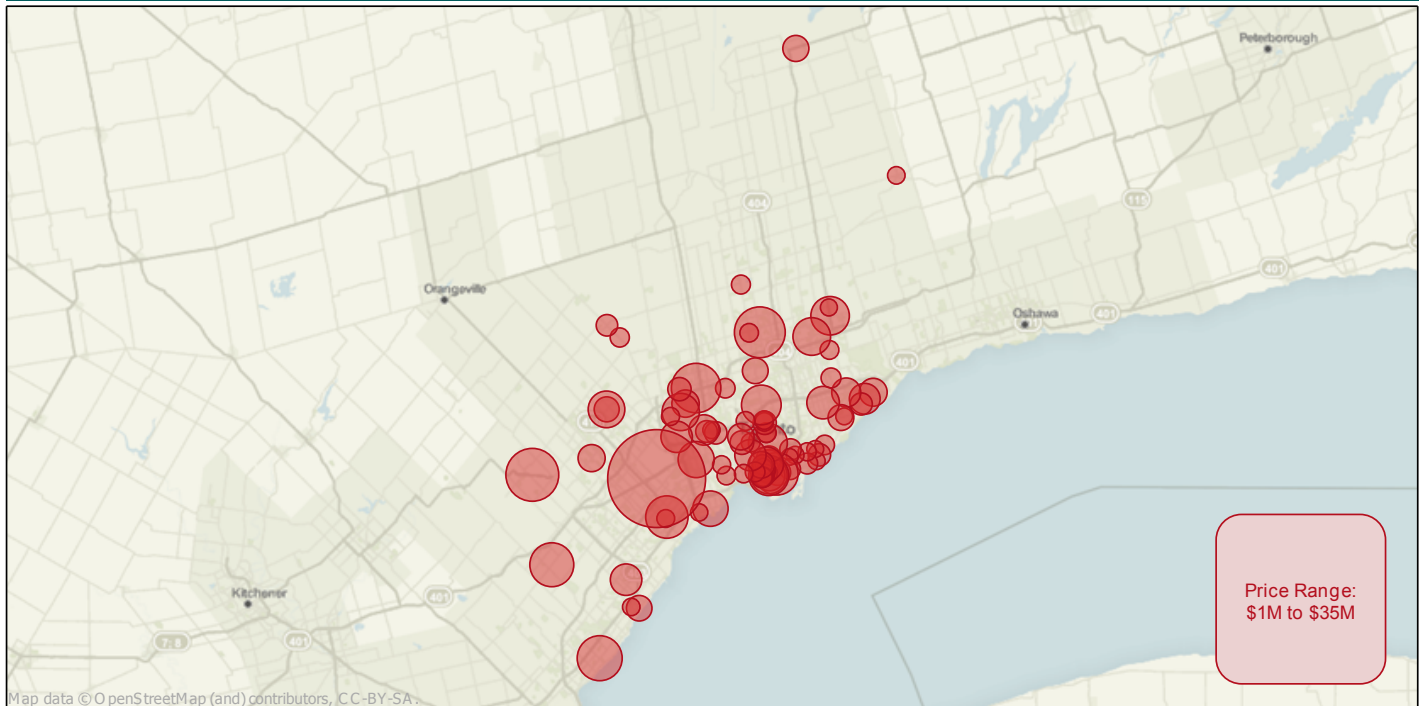
## Apartment Property Transactions - Q2 2010



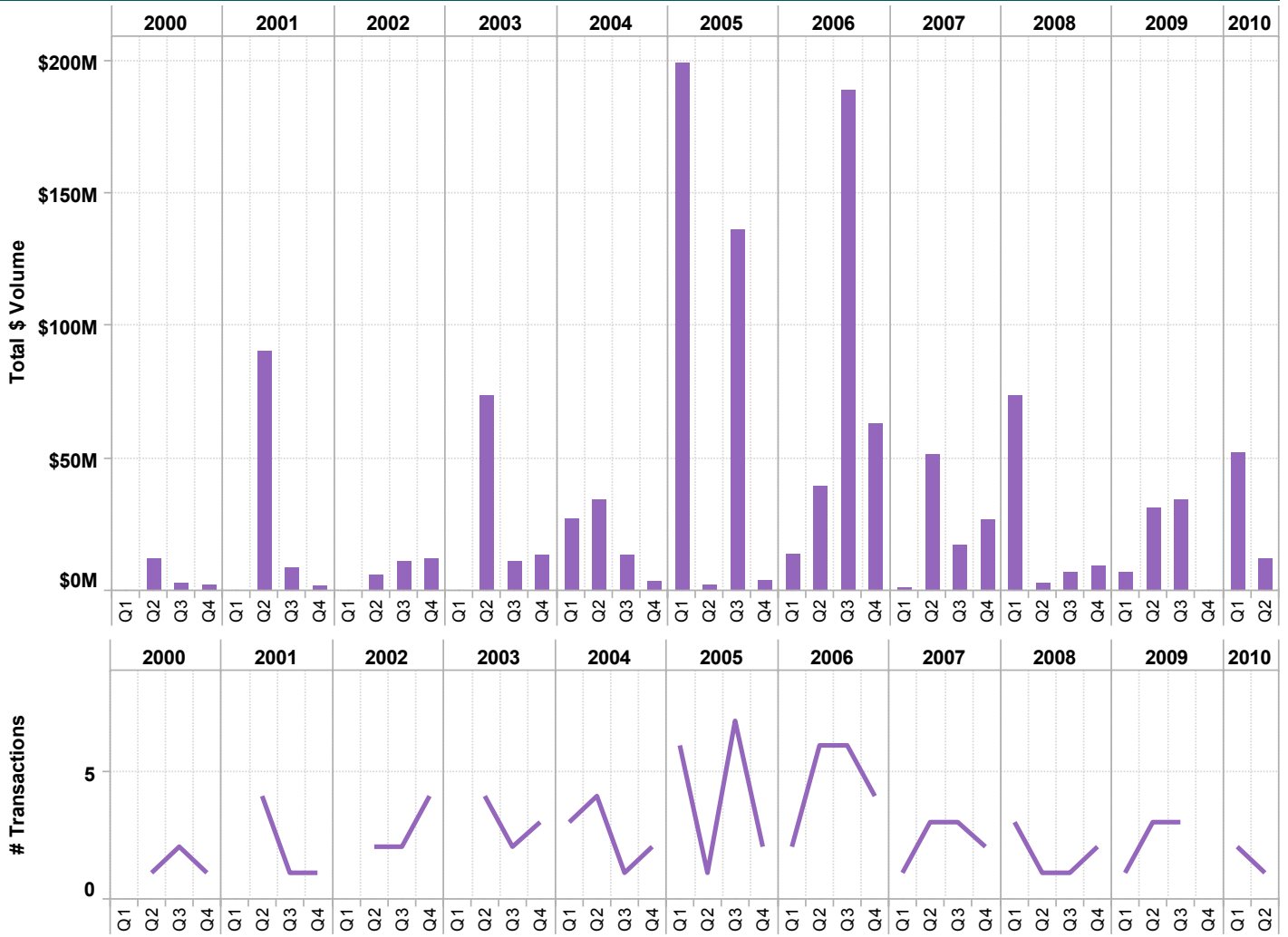
## Retail Property Transactions - Q1 2000 to Q2 2010



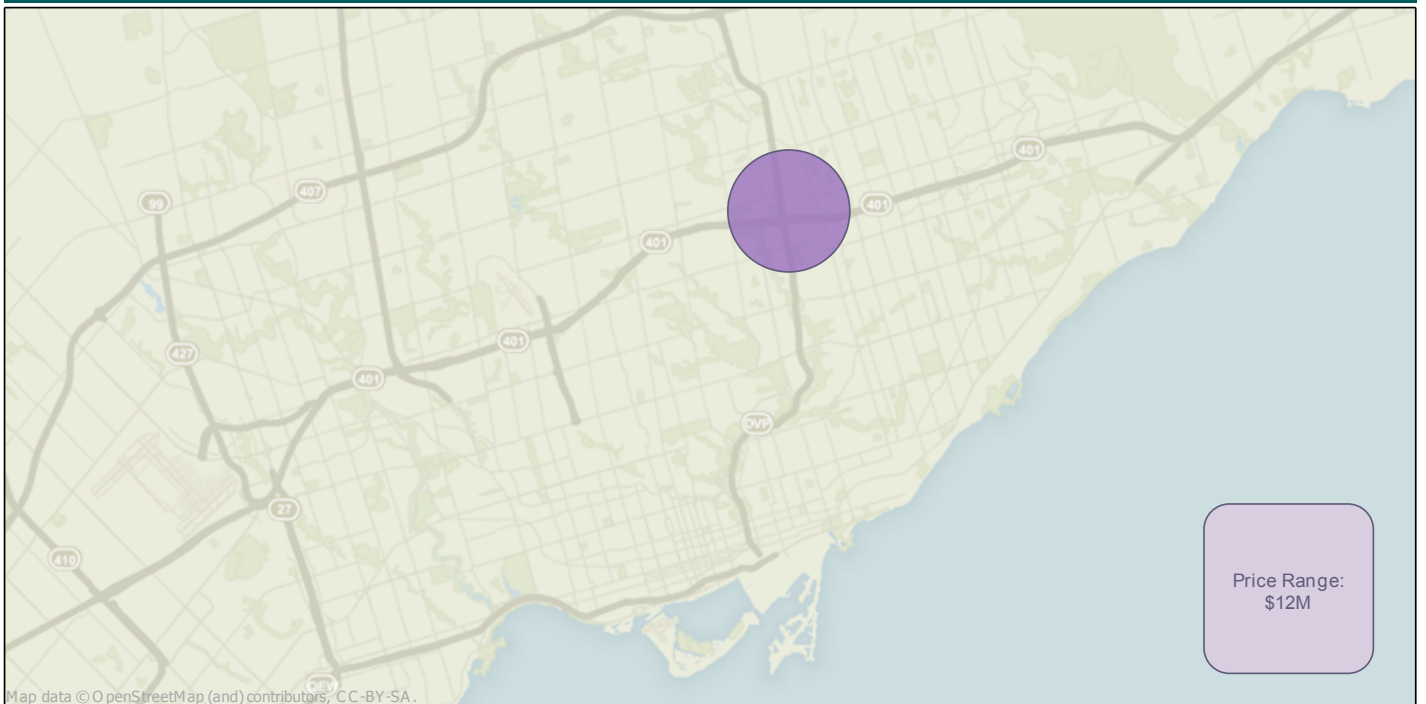
## Retail Property Transactions - Q2 2010



### Hotel Property Transactions - Q1 2000 to Q2 2010

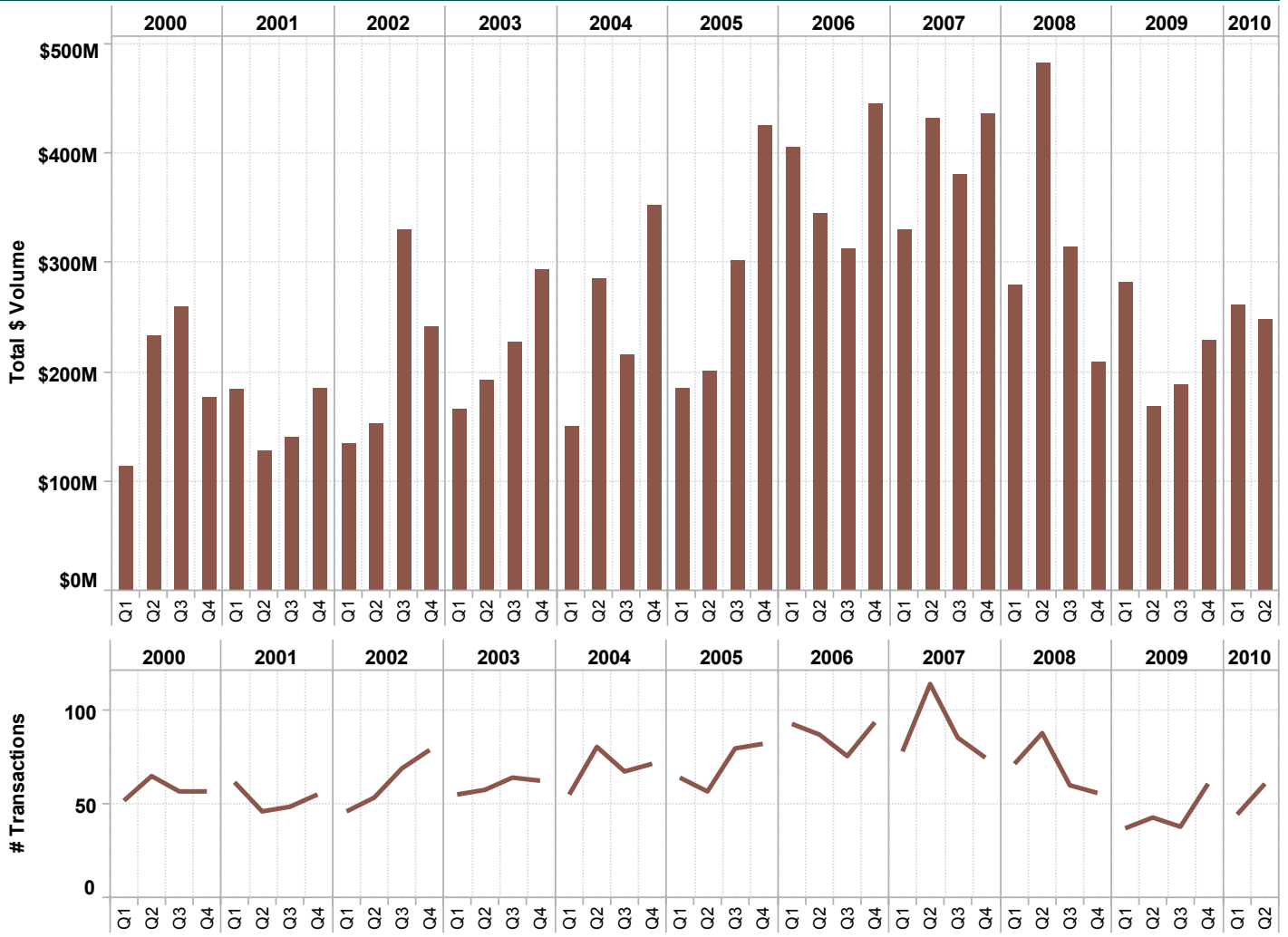


### Hotel Property Transactions - Q2 2010

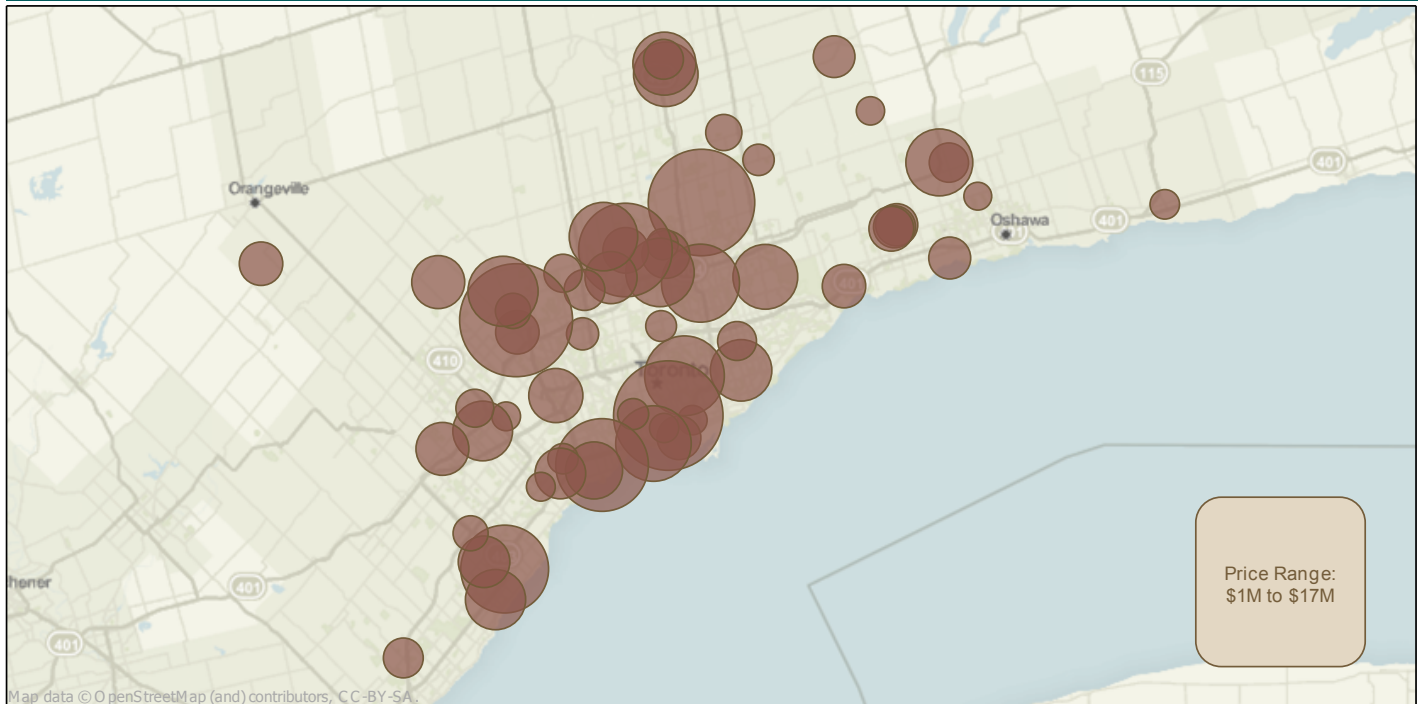




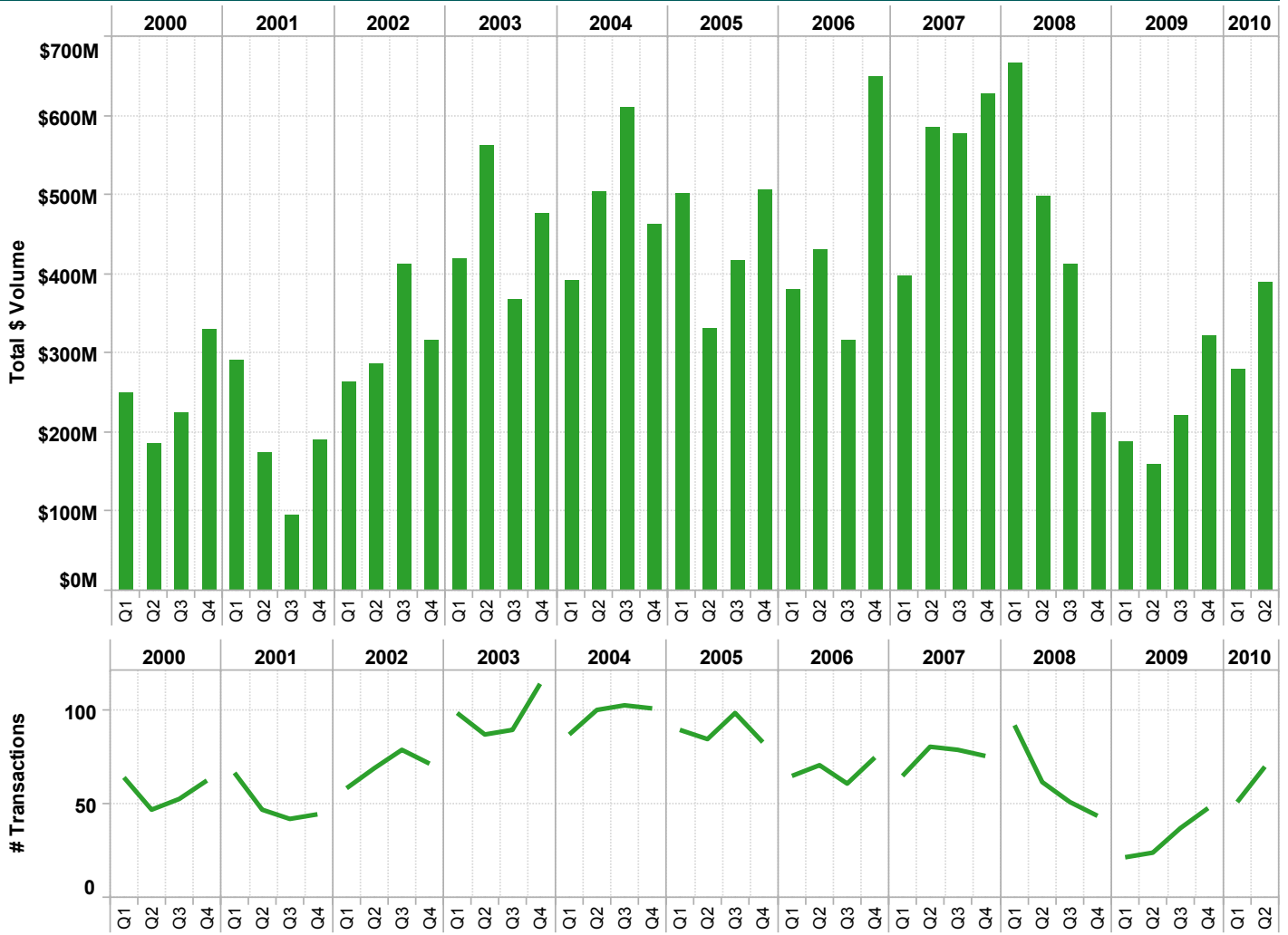
### ICI Land Property Transactions - Q1 2000 to Q2 2010



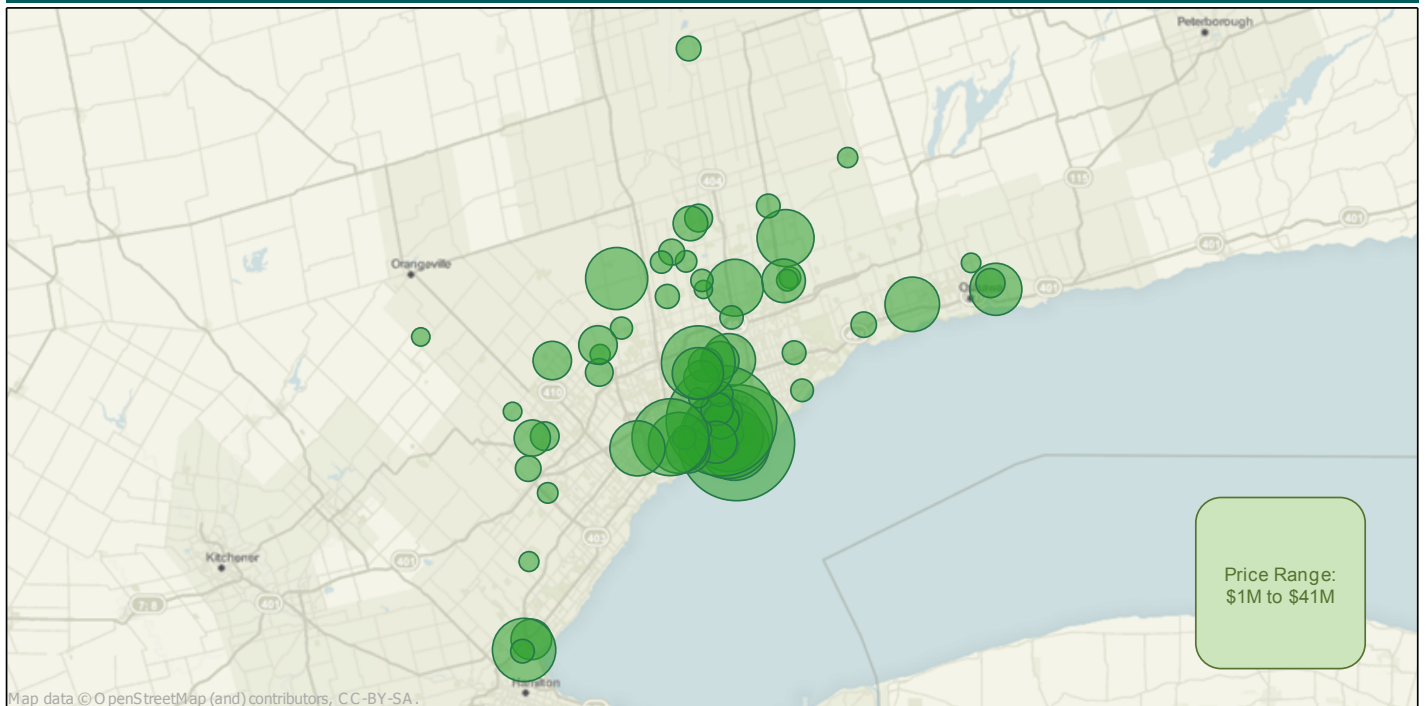
### ICI Land Property Transactions - Q2 2010



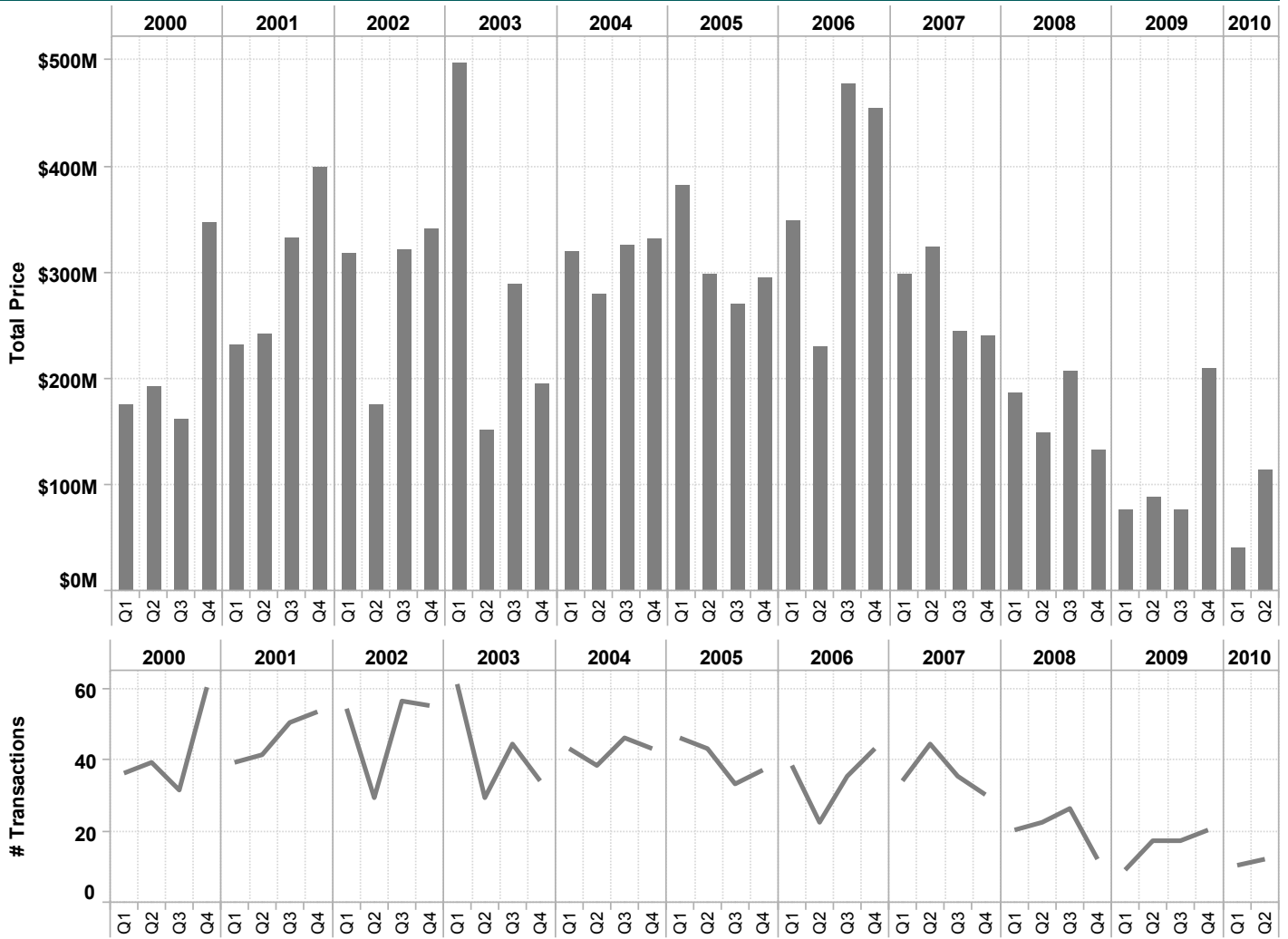
## Residential Land Property Transactions - Q1 2000 to Q2 2010



## Residential Land Property Transactions - Q2 2010



## Residential Lot Property Transactions - Q1 2000 to Q2 2010



## Residential Lot Property Transactions - Q2 2010

